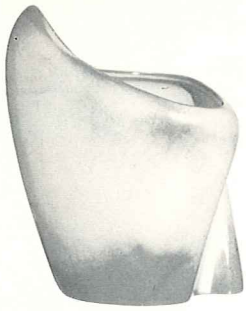


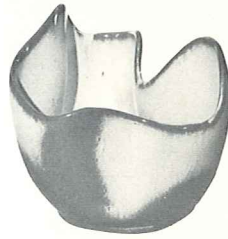
Appropriate Containers For Beautiful Flower Arrangements



6-7" FREE FORM VASE-



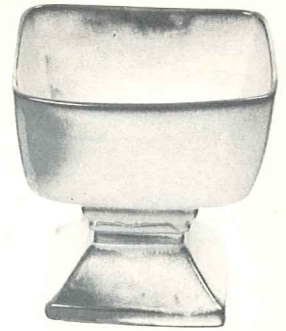
35-6" FOOTED BOWL-



F29-6" DRAPERY VASE-



190-6" WALL VASE-



23-7" SQ. PEDESTAL VASE-



F34-8" RICE BOWL-



59-6 1/2" CANTEEN-



F33-7" FLUTED PLANTER-



F35-7" PEDESTALLED VASE-



57S-6" CORNUCOPIA-



F52-7" PEDESTALLED URN-



OLD FASHIONED PITCHER SET
F30A-5 1/2" PITCHER-
F30B-7" BOWL-



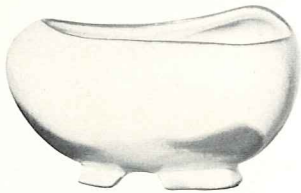
40A-SMALL PITCHER-
40B-BOWL-



37-4" HEXAGONAL PLANTER-



57-7" CORNUCOPIA-



234-FOOTED FREE FORM BOWL-



222-12" CORNUCOPIA-



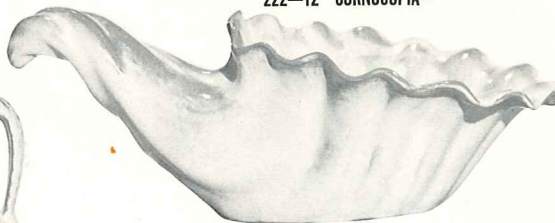
65-8" HEXAGONAL VASE-



19-7" FAN VASE-



71-10" LEAF HANDLED VASE-



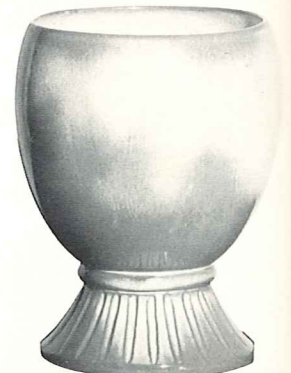
215-15" CORNUCOPIA-



22S-5" FOOTED ROUND VASE-



22-7" FOOTED ROUND VASE-



52-8" URN-